



Willkommen

welcome
bienvenue



EOQ Congress 2011



QUARISMA

Quality and Risk Management in Meat Chains

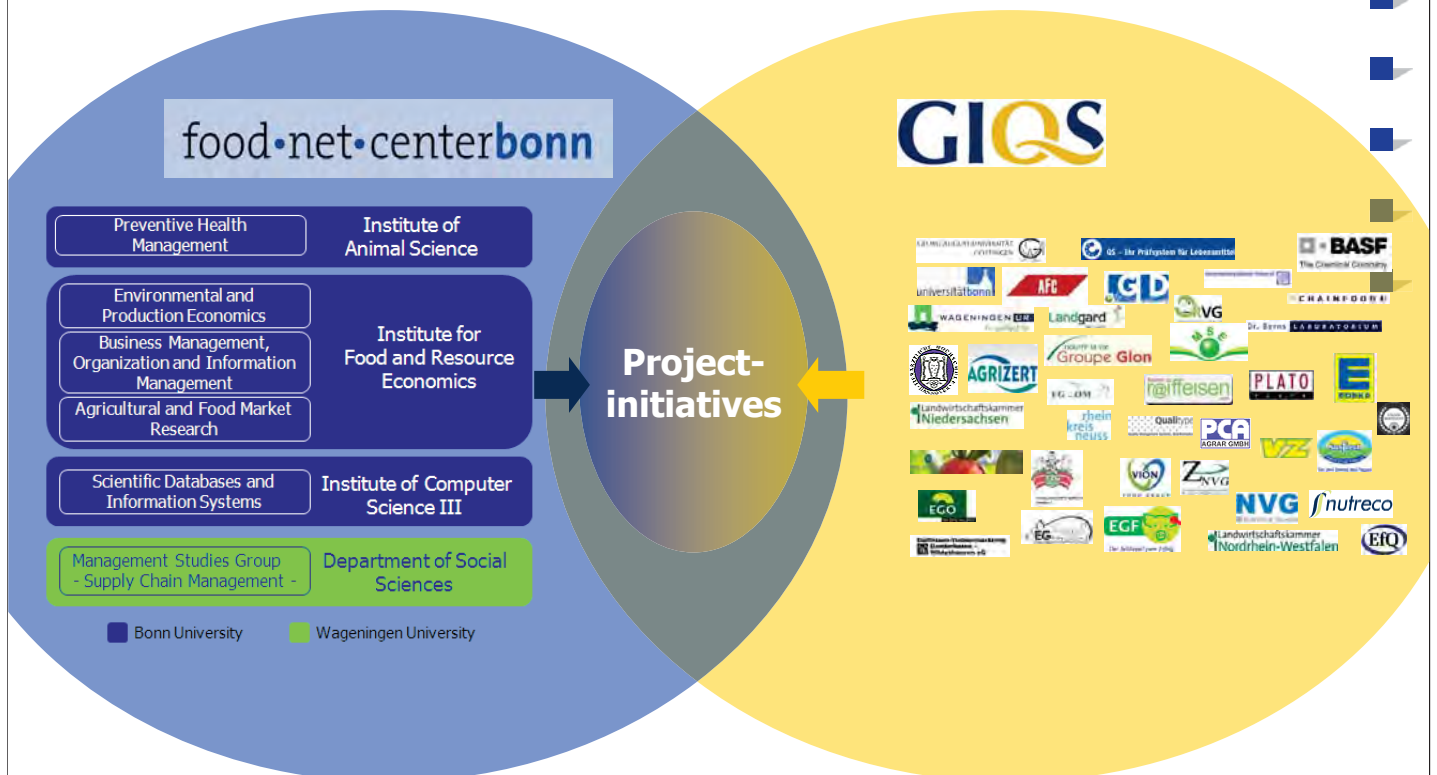
Detert Brinkmann, J. Lang and B. Petersen
FoodNetCenter Bonn
University of Bonn

Budapest, 20.06.2011

Content

1. Research infrastructure
2. From idea to project
3. QUARISMA
4. Summary

Research infrastructure





From idea to project



„Marie Curie Actions“ 7th research framework programme of the EU (FP7)



Marie Curie Actions
Human resources and mobility

Industry Academia Partnerships and Pathways (IAPP)

2008 - budget for project funding: 45 Mio. €

1st call A practice

March 2007: Information by the Federal Ministry of Research in NRW (MIWFT)

April: Participation in an information event of the EU in Brussels

- Search for partners → Information of the own R&D network
- Support by EU advisors
 - KOWI
 - EUROCONSULT
 - NKS Mobilität
- Preparation of the proposal

May: application - **Q**UALity and **R**ISK **M**ANagement in Meat Chains

July: Evaluation

→ negative, project too large (call too small ☺)

2nd call (2008) New game, new luck?!

Where there's a will there's a way!

Comparable procedure –
though with experience and evaluation results

Programme "People"
Marie Curie Action
"Industry-Academia Partnerships and Pathways" - IAPP
Call: FP7-People-IAPP-2008

Evaluation Results by status and by proposal number

PROPOSAL NUMBER	ACRONYM	STATUS
228821	QUARISMA	A
---	---	---
---	---	---
---	---	---
---	---	---
---	---	---
---	---	---
---	---	---

Framework conditions**IAPP: Support of the inter-/national personnel exchange between industry and science****Objectives:**

- Transfer of knowledge and know-how- (practice ↔ research)
- International careers

What is promoted:

- Exchange of persons with a university degree (main activity)
- Research activities
- „Networking“

Optional:

- Recruitment of experienced experts (external)
- Organisation of workshops and conferences

Framework conditions**Who can be exchanged/recruited?**

(Personnel categories)

- **ESR** Early-stage researchers (<4 years of experience)
(no recruitment) → university graduates, PhD students
- **ER** Experienced researchers (4-10 years)
→ Post-Docs, Doctors (or senior PhD students)
- **MER** More experienced researchers (>10 years)
→ Doctors, Professors

How long?

- Exchange: 2 - 24 months
- Recruitment: 12 - 24 months



What do participating researchers obtain?

- Salary, according to experience
- Mobility surcharge (monthly, cross-boarder exchange)
 - 800 € (500 €) per month (unmarried)
- Travelling allowance (depending on distance to home town)



What do participating companies obtain?

- Refund of the personnel costs (according to EU guidelines)

Personnel category	EU contribution per year
ESR	33.800 €
ER	52.000 €
MER	78.000 €

- TOK-programme (transfer of knowledge)
 - 800 € per month and hosted researcher
- Development of the career (only for recruitments)
 - 2000 € per person
- Overhead (+10% on top of the budget)

QUARISMA

An international training program for researchers

Headlines

WELT ONLINE
WIRTSCHAFT

LEBENSMITTELSKANDAL Dioxin-Fleisch in deutschen Firmen aufgetaucht

8. Dezember 2008, 12:08 Uhr
Dioxinverseuchtes Schweinefleisch aus Irland ist offenbar an fünf Betriebe in Deutschland geliefert worden. Bis zu 2000 Tonnen Fleisch wurde an Firmen in Nordrhein-Westfalen und Schleswig-Holstein geliefert. Akute Vergiftungsgefahr besteht nicht, aber Dioxin lagert sich im Fettgewebe ein und kann später Krebs auslösen.

VERBRAUCHER Fleisch wird zum Lebensmittel der Unterschicht

8. April 2009, 08:55 Uhr
Der Ruf der Fleisch-Branche bei deutschen Verbrauchern ist dahin. Wer gut verdient und studiert hat, isst heute am liebsten Salat und Gemüse. Ein Grund für den Fleischverzicht der Oberschicht sind die Gammelfleisch-Skandale. Doch die Hersteller haben noch aus anderen Gründen ein Image-Problem.



15 January 2011 | Last updated: 12:21 GMT
More farms closed in Germany as dioxin scare continues
Germany has closed 934 more poultry and pig farms as fears over the contamination of dioxin in animal feed continue.
The move came after a manufacturer in Lower Saxony was found to have hidden some of the outlets it sold produce to.
Farms were closed in Lower Saxony as well as in North Rhine-Westphalia, Bavaria and Brandenburg.
The scandal began last week after high levels of dioxin, known to cause cancer, were found in eggs and pork.
As a result, 100,000 eggs were destroyed and thousands of farms were closed, although most have since been allowed to resume operations.



Excessive levels of dioxin were found in pork, eggs and chicken
BBC
NEWS EUROPE

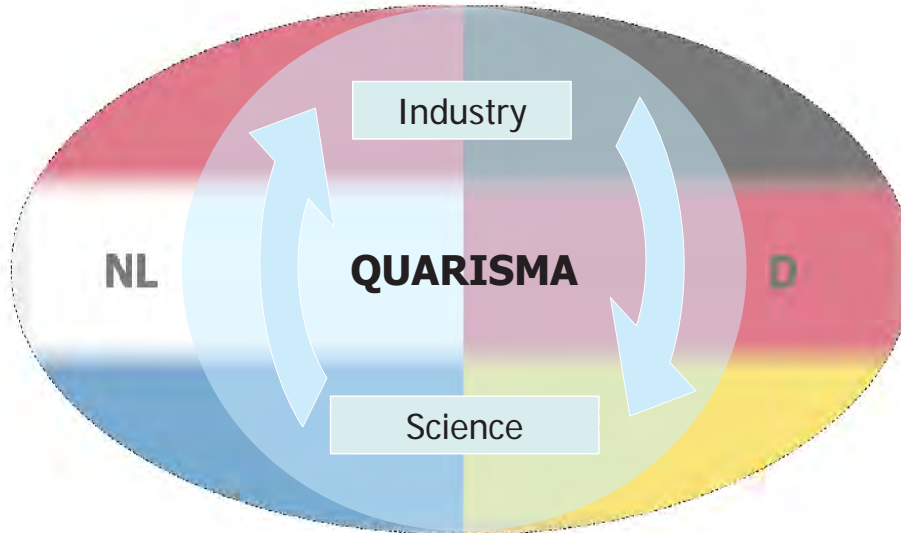
'Scandal within scandal'

Officials in Lower Saxony say they have opened an investigation after

QUARISMA

The model

Quality and Risk Management in meat producing chains



Close trade relations in food production

QUARISMA

Project consortium



Marie Curie – IAPP
QUARISMA



Objective:

Support of the transfer of knowledge and know-how between meat industry and universities through interdisciplinary cooperations and personnel exchange

QUARISMA

Project consortium



Marie Curie – IAPP

QUARISMA



Thematical focus

- Supply Chain Management
- Quality and Information Management
- Risk Management and Food Safety
- QM advanced training measures

QUARISMA

IAPP activities

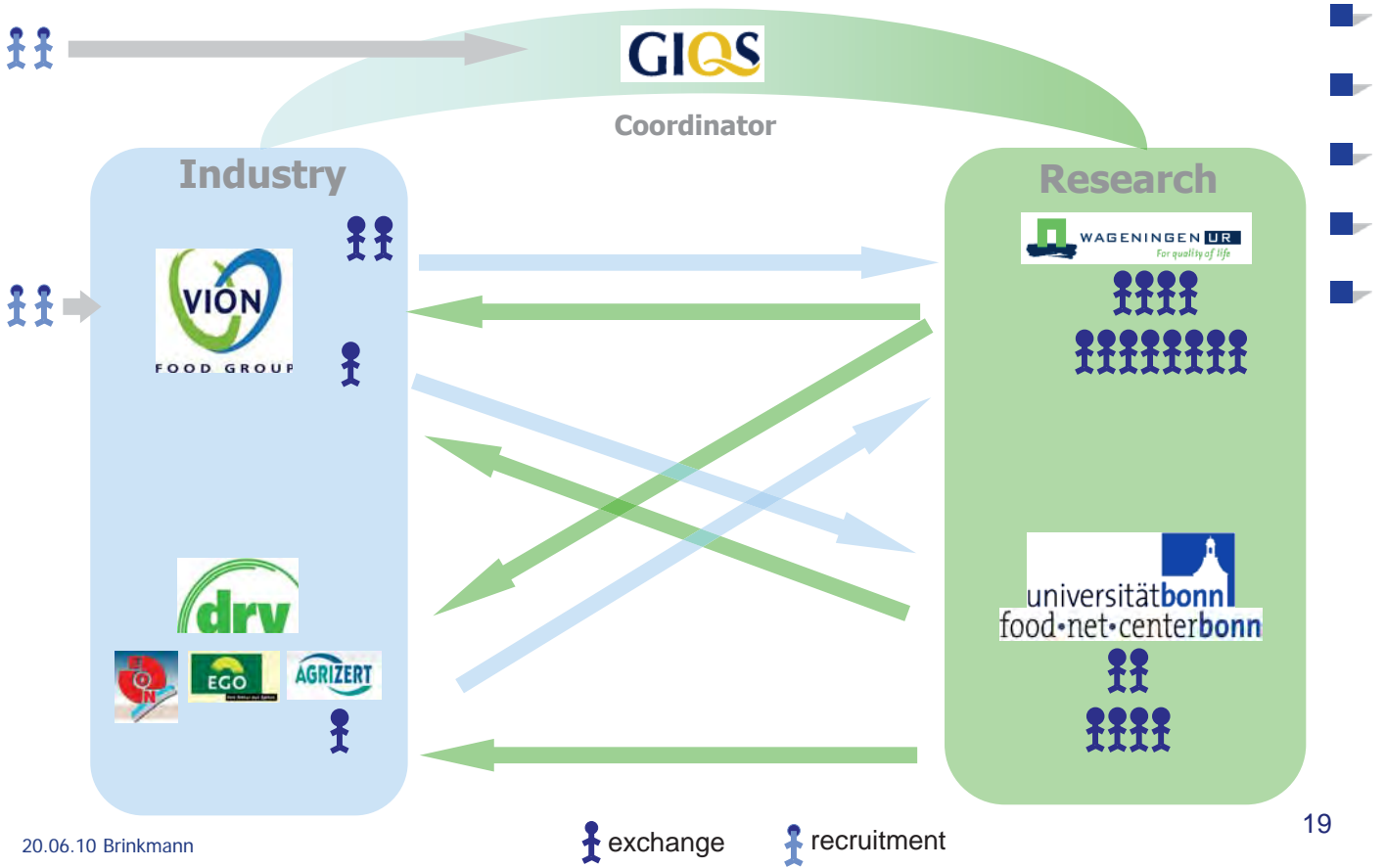
- Personnel exchange of 22 researchers
- International recruitment of 4 scientific experts
- Training and advanced training for quality managers
- Expert seminars and international conferences

Runtime: 2009-2013 (48 months)

Budget: 2,5 Mio. €

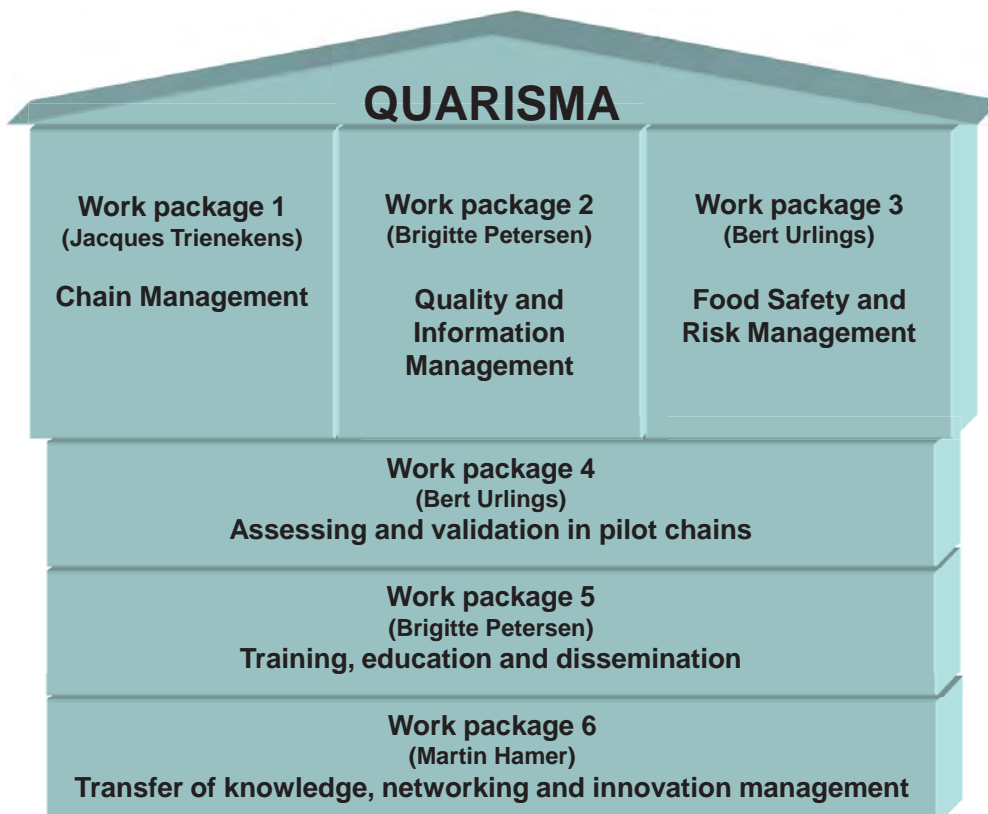
QUARISMA

IAPP activities



QUARISMA

Research activities



Secondments and recruiting

- 2 experts were recruited
- 4 researcher were seconded
- 8 researcher are appointed

Events

- 1 kick-off event took place (2009)
- 1 conference (2009) – The Meat Week
- 2 workshops (2010/2011)
- In October 2011 a workshops will take place in Münster (North-Rhine Westfalia)

Further information?

→ Please listen to the presentation of Dr. Susanne Lehnert at 22.06.2011

Summary**Challenges:**

- Extensive programme guidelines
- Lead time (>1 year)
- Motivation of partners
- Integration of further participants to enlarge the project

Advantages:

- International cooperation (S2B)
- strengthening of practice-oriented research and training
- Attractive financing
- Working on the spot



**Thank you
for your attention!**

food•net•center**bonn**



www.foodnetcenter.uni-bonn.de



Acknowledgement



The research leading to these results has received funding from the European Community's Seventh Framework Programme FP7/2007-2013 under grant agreement n° 228821.